

**PROPRIETARY DATA:**  
 This document and information contained may not be reproduced, used or disclosed without prior written permission of WESTCOR a division of VICOR Corporation.

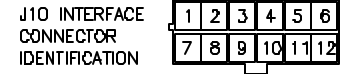
REVISIONS

| ECO  | REV | DESCRIPTION                       | DATE     | APPROVED |
|------|-----|-----------------------------------|----------|----------|
| 256  | A   | PRODUCTION RELEASE                | 1/13/94  | RBD      |
| 280  | B   | REVISED PER ECO                   | 3/14/94  | RBD      |
| 482  | B1  | CHG PIN 1 LOCATION ON J3          | 12/21/95 | RBD      |
| ---  | B2  | CHG: .45 (11.4MM) TO .47 (12.0MM) | 30/30/99 | LGK      |
| ---  | B3  | ADD MISSING DIMENSIONS            | 06/16/00 | LGK      |
| 1137 | C   | ADD REFERENCE TO VICOR WEB PAGE   | 3/21/02  | RME      |

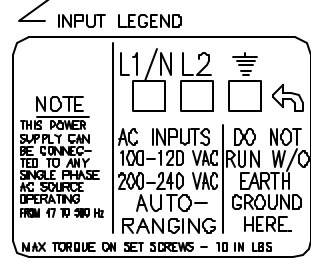
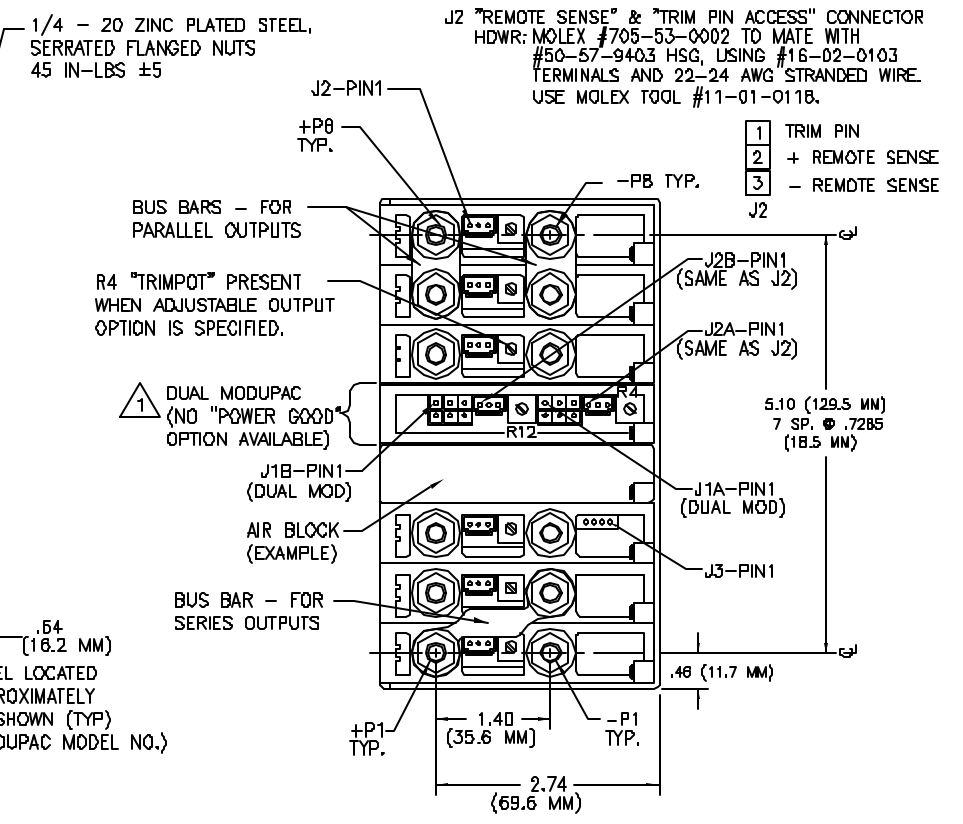
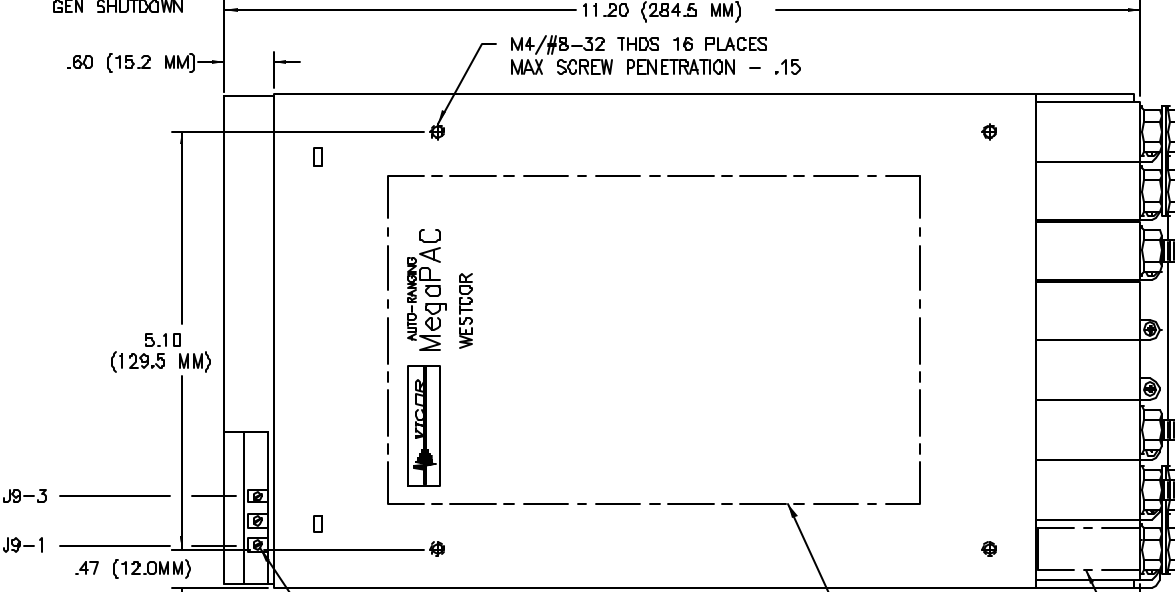
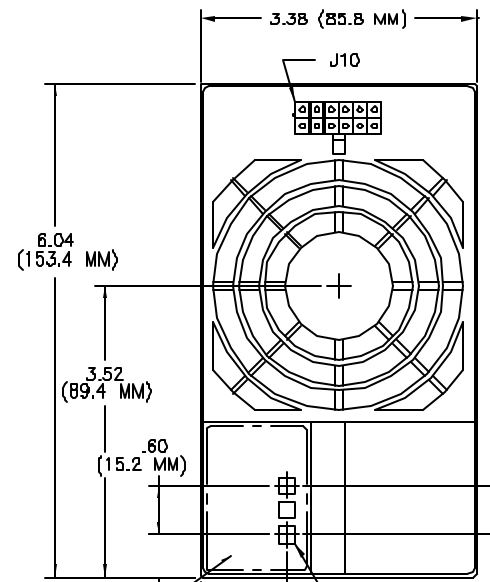
J10 INTERFACE PIN OUT

|        |               |
|--------|---------------|
| J10-1  | E/D-1         |
| J10-2  | E/D-2         |
| J10-3  | E/D-3         |
| J10-4  | E/D-4         |
| J10-5  | E/D-5         |
| J10-6  | E/D-6         |
| J10-7  | E/D-7         |
| J10-8  | E/D-8         |
| J10-9  | Vcc +5V, 0.3A |
| J10-10 | SIGNAL GROUND |
| J10-11 | AC POWER OK   |
| J10-12 | GEN SHUTDOWN  |

NOTE: A DETAILED DESIGN GUIDE IS AVAILABLE @ [www.vicorpower.com](http://www.vicorpower.com)



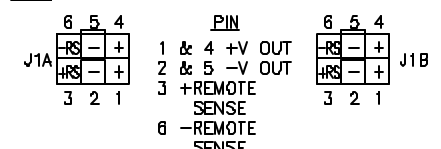
HDWR: MOLEX HEADER MINI-FIT JR. 12 POS #39-30-1120. CUSTOMER I/O INTERFACE MATING RECEPTACLE MOLEX #39-01-2120. WITH TERMINAL #39-00-0039 AND 18-24 AWG STRANDED WIRE. USE MOLEX TOOL #11-01-0122.



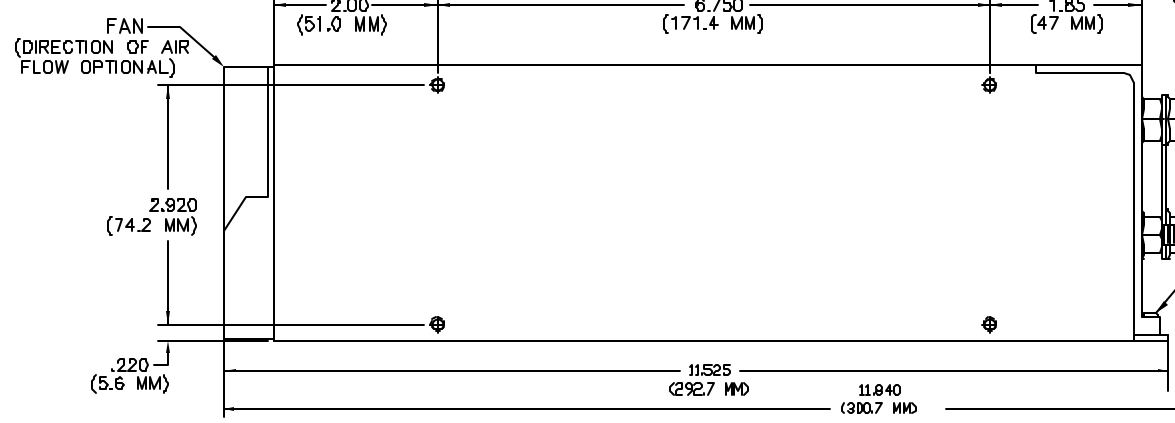
J9 INPUT CONNECTIONS  
 J9-1 EARTH GROUND  
 J9-2 AC HOT  
 J9-3 AC NEUTRAL

NOTES: UNLESS OTHERWISE SPECIFIED

1 DUAL MODUPAC OUTPUT CONNECTIONS



J1A & J1B REMOTE SENSE/OUTPUT CONNECTORS ARE MOLEX #39-30-1060 MINI-FIT JR. HDRS. MATING RECEPTACLE IS MOLEX #39-01-2060 HOUSING WITH #39-00-0039 TERMINALS AND 18-24 AWG STRANDED WIRE. USE MOLEX TOOL #11-01-0122.



|             |                      | UNLESS OTHERWISE SPECIFIED DIMENSIONS ARE IN INCHES TOLERANCES ARE: | CONTRACT NO.       |              |
|-------------|----------------------|---|--------------------|--------------|
|             |                      | FRACTIONS ± ---   | DECIMALS .XX ± .02 | ---          |
|             |                      | ANGLES ± ---  | XXX ± .010         | ---          |
|             |                      | MATERIAL  | APPROVALS          | DATE         |
|             | SEE MIS              | ---   | LSANTOS            | 01/04/94     |
|             |                      | FINISH  | CHECKED            | H.A. POWERS  |
| NEXT ASSY   | USED ON              | ---   | APPROVED           | R.B. DRABING |
| APPLICATION | DO NOT SCALE DRAWING | ---   | DESIGNED           | ---          |



OUTLINE AUTO-RANGING MEGAPAC

| SIZE  | CAGE CODE | DWG NO.             | REV          |
|-------|-----------|---------------------|--------------|
| B     | 0E5V2     | 08-040831           | C            |
| SCALE | 1/2       | FILENAME: 08-040831 | SHEET 1 OF 1 |