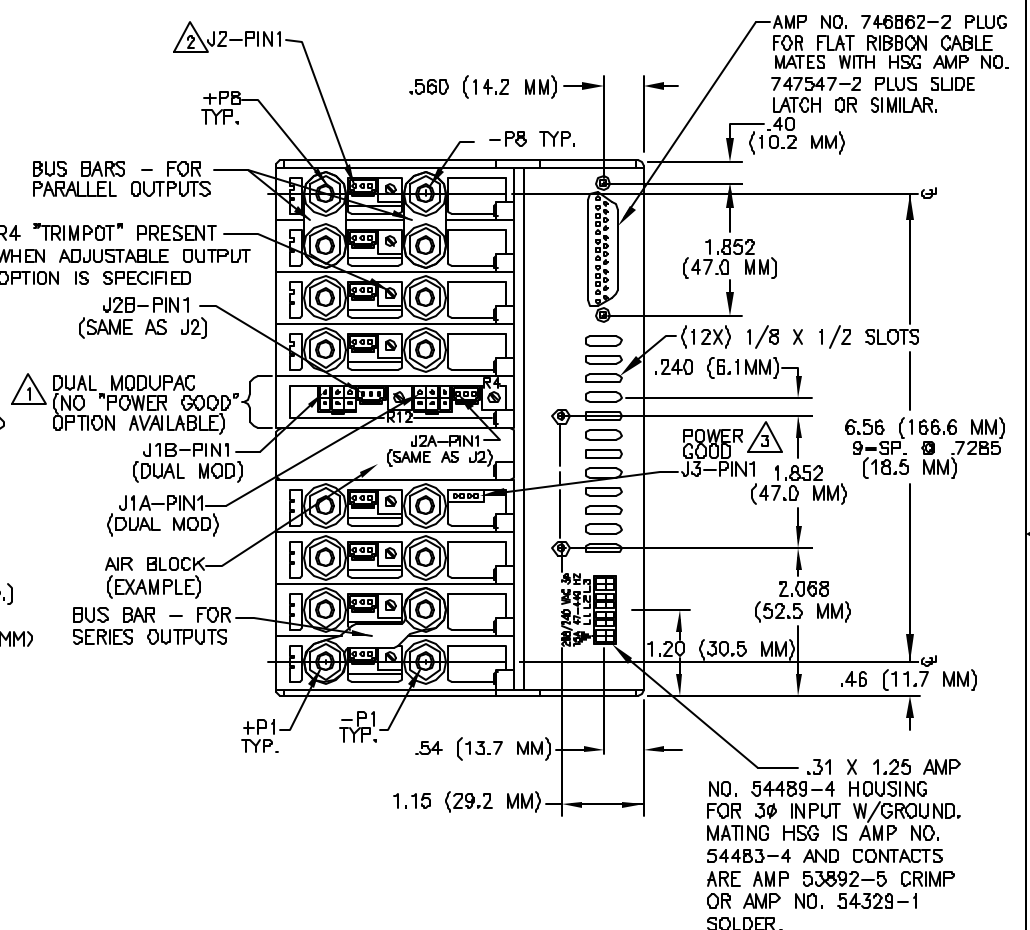
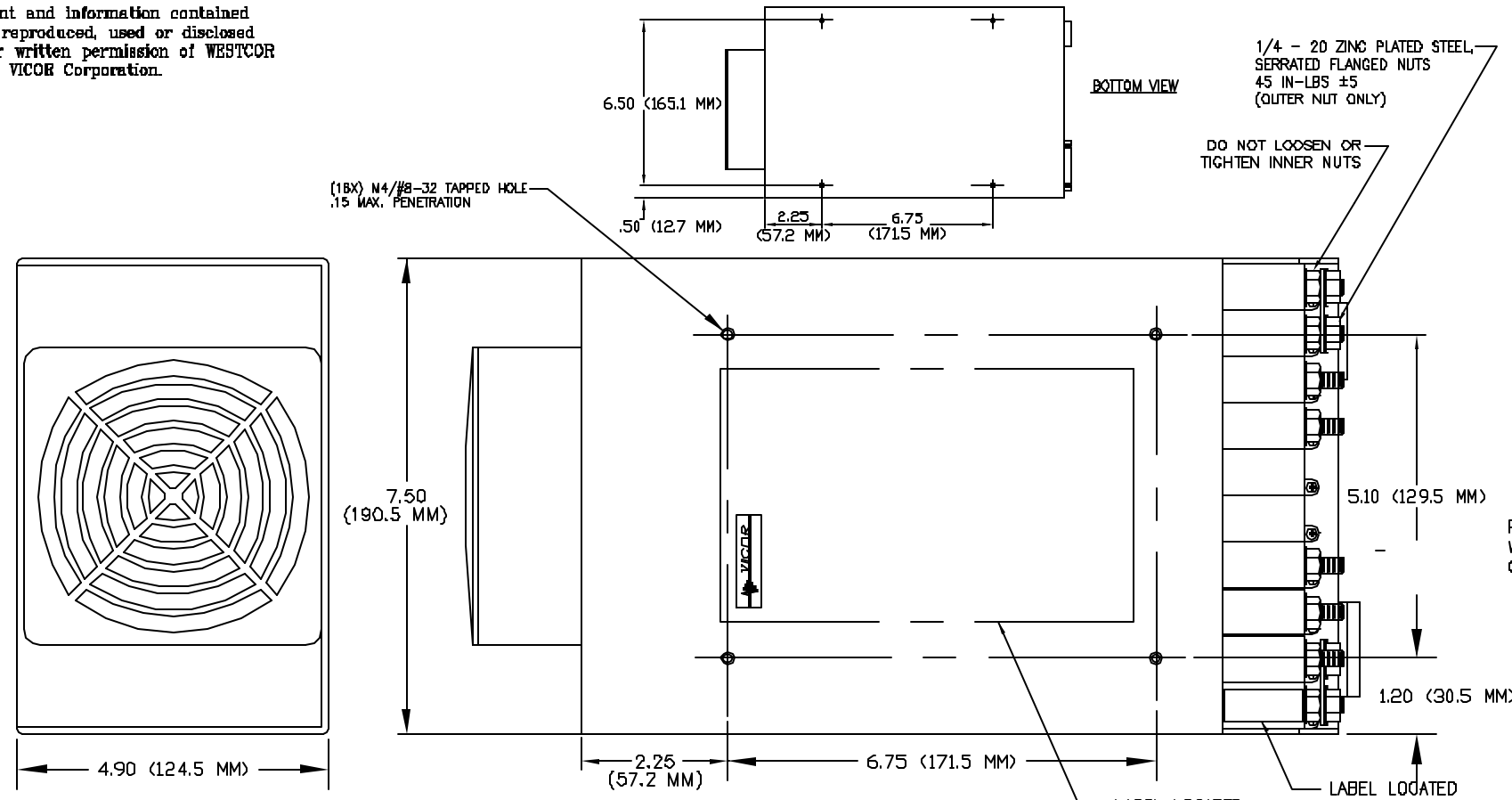
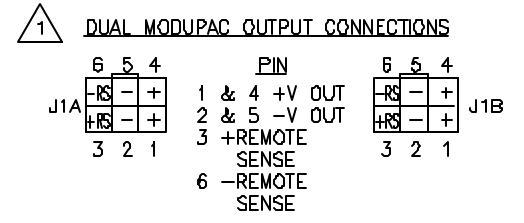


PROPRIETARY DATA:
 This document and information contained
 may not be reproduced, used or disclosed
 without prior written permission of WESTCOR
 a division of VICOR Corporation.

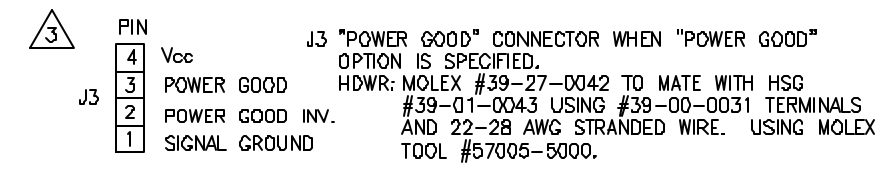
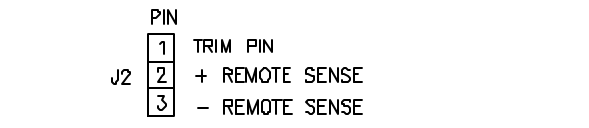
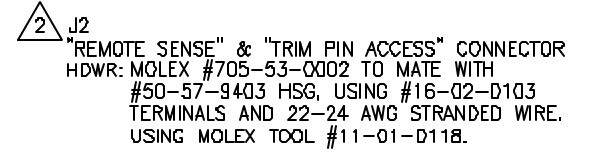
| REVISIONS | | | | |
|-----------|-----|---------------------------------|----------|----------|
| ECO | REV | DESCRIPTION | DATE | APPROVED |
| 726 | A | RELEASE TO PRODUCTION | 11-20-97 | RBD |
| -- | A1 | CHG: .600 DIM TO .250 | 06/06/00 | LGK |
| 1137 | B | ADD REFERENCE TO VICOR WEB PAGE | 3/21/02 | RME |
| 1237 | C | REVERSE THE PIN NUMBERS ON (J3) | 01/16/03 | LGK |



NOTES: UNLESS OTHERWISE SPECIFIED



J1A & J1B REMOTE SENSE/OUTPUT CONNECTORS ARE MOLEX #39-30-1060 MINI-FIT JR. HDRS. MATING RECEPTACLE IS MOLEX #39-D1-2060 HOUSING WITH #39-00-0039 TERMINALS AND 18-24 AWG STRANDED WIRE. USING MOLEX TOOL #11-01-0122.



NOTE: A DETAILED DESIGN GUIDE IS AVAILABLE @ www.vicorpower.com

| | | | | |
|-------------|----------------------|---|--------------------|---------------------|
| | | UNLESS OTHERWISE SPECIFIED DIMENSIONS ARE IN INCHES TOLERANCES ARE: | CONTRACT NO. --- | |
| | | FRACTIONS ± 1/32 | DECIMALS .XX ± .01 | ANGLES ± 1/2° |
| | | --- | --- | --- |
| | | MATERIAL | APPROVALS | DATE |
| | | --- | S. KEITH | 08/24/97 |
| | | SEE MIS | CHECKED | D.BIGELOW |
| | | --- | APPROVED | R.B.DRABING |
| | | FINISH | DESIGNED | --- |
| | | --- | --- | --- |
| APPLICATION | DO NOT SCALE DRAWING | SCALE | NTS | FILENAME: 08-130080 |
| | | SIZE | B | CAGE CODE |
| | | | 0E5V2 | DWG NO. |
| | | | 08-130080 | REV |
| | | | C | SHEET |
| | | | 1 OF 1 | |