

Soldering Methods and Procedures for Vicor ROHS Compliant Power Modules

Overview

This document is intended to provide guidance for making high quality solder connections of RoHS Compliant Vicor Power Modules to printed circuit boards. This application note applies to lead free soldering of Vicor’s RoHS compliant modules; for non-RoHS compliant product, please see application note *Soldering Methods and Procedures for Vicor Power Modules Overview*. The following provides an outline for appropriate soldering procedures and the evaluation of solder joints to insure an optimal connection to the power module. Common soldering defects will be examined and direction will be provided for detecting and handling them. Vicor’s manufacturing facilities use the IPC-A-610 standards for establishing quality solder joints. It is recommended that manufacturing processes using Vicor modules refer to these same standards, which can be found, along with supporting documentation, at www.ipc.org.

Analysis of a Good Solder Joint

The IPC-A-610 standard requires that solder fill at least 75% of the barrel in order to insure a solid connection. Ideally all connections should have a 100% fill. In order to accomplish this, the solder applied to both the barrel and the pin must exhibit a process known as wetting. Wetting occurs when liquid solder on a surface is heated to the point that it loses a significant amount of latent surface tension and evenly coats the surface via capillary action (both cohesion and adhesion).

During the soldering process wetting can be identified by an even coating of solder on the barrel and pin. In addition to coating the surface of barrel and pin the solder will gather at the intersection of the two and produce a trailing fillet along each surface. Once wetting has occurred, then upon

solidification it will bond appropriately to both components, producing a quality connection.

Figure 1 shows a side profile of a good solder joint with a power module. Notice that the solder forms a concave meniscus between pin and barrel. This is an example of a properly formed fillet and is evidence of good wetting during the soldering process. The joint between solder and pin as well as solder and pad should always exhibit a feathered edge. In *Figure 1* it can also be seen that the solder covers a good deal of the surface area of both the pin and the pad. This is also evidence of good wetting. (Notice also that the solder joint is dull compared to leaded processing). This is evidence of good immobilization of the joint during cooling as well as good cleaning of the board prior to soldering. All soldering connections should exhibit similar characteristics regardless of whether they are soldered by hand, by fountain, or by wave.

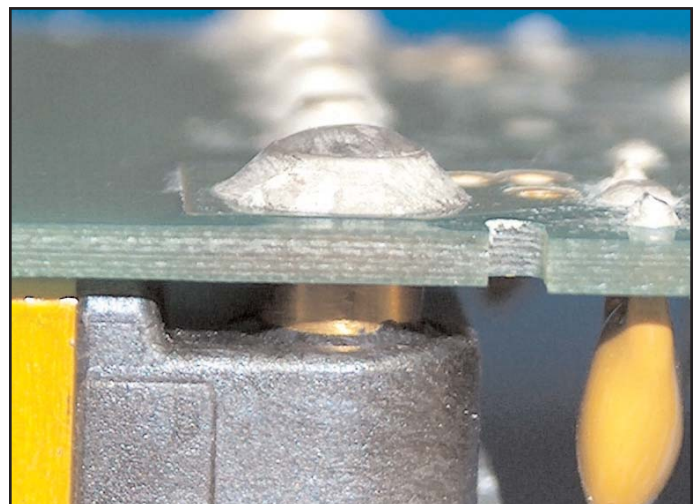


Figure 1: Side profile of power module RoHS solder joint.

In examining a solder joint, be sure that there is no solder connecting one pad to another. This is known as a solder bridge and will be discussed later.

Soldering Procedures

Hand Soldering

Before soldering, make sure that the PCB is clean and free of debris, chemical residue, or liquid. It is not recommended that additional flux other than what is contained in the solder be used during soldering as it potentially leaves a residue that cannot be removed without potentially damaging or compromising the power module. Also, the presence of these residues on the modules may cause harm or improper operation.

The pins on Vicor modules are optimized to provide a low resistance electrical connection. The final mounting scheme for any module should be designed to minimize any potential mechanical stress on the pins and solder joints. Modules with heat sinks or modules used in systems that are subject to shock or vibration should use standoffs to minimize stress on the pins. It is not recommended that discrete wires or connectors be soldered directly onto a module.

Also necessary for a good solder connection is pin protrusion from the PCB. It is not possible to create a good solder joint without some protrusion of module pins from the PCB. If the PCB is too thick to allow good pin protrusion, consider using Vicor module accessories such as sockets to allow proper mounting. See Vicor's accessory catalog at www.vicorpower.com for a complete list of module accessories. Before soldering, the module should be mechanically affixed or immobilized with respect to the PCB to insure no movement during the soldering process. The standoffs can be used for this process. Vicor Power modules contain two types of pins, power pins (which deliver the power to the load and are typically sized according to the rated output current) and signal pins (which typically carry very little current and are of a uniform size across a given product family). The larger the pin, the more soldering time required to form an adequate connection. In addition to the sizing of the pin, the time required to create a robust connection will vary

depending on several parameters:

a) PCB thickness: The thicker the printed circuit board, the more heat it is able to dissipate, and will require more soldering time.

b) Copper Trace area: Power pins require large copper traces to minimize resistive power losses in carrying the power to the load. Since the copper tends to conduct heat well, the actual size of these copper traces directly affect the amount of time necessary to heat the PCB socket.

c) Copper Trace thickness: As above, the thickness of the copper trace is a function of output current of the module, and has a direct impact on the amount of soldering time. Typically PCB copper thickness is specified in terms of weight per square foot, typically 2oz. or 3oz. copper for current carrying planes.

d) Soldering iron power: A higher power soldering iron can source more heat and thus take less time to heat a PCB trace. As a soldering iron is heating a point on the board, everything that is adjacent to this point is being heated as well, including the Vicor power module. A large copper trace, due to the fact that it conducts heat very well, will exhibit less of a thermal gradient and thus a low power soldering iron will have to heat the whole trace to a higher temperature before the area close to the iron is hot enough to flow solder. Due to the fact that the trace and board are both dissipating and conducting thermal energy, some irons may not have enough power to heat a trace to the temperature that will allow proper soldering.

e) Tip temperature: Typical SAC-type solder melts at 215-225°C. Pb-free soldering requires a tip temperature of about 800°F. A higher tip temperature will bring the barrel and pin above the melting point of solder faster. However, a higher tip temperature may cause damage to the pad, printed circuit board or module pin.

f) Type of Lead-Free Solder: The actual melting point of the solder varies depending on the type of solder used and affects the necessary temperature of the pad and pin for flow. Vicor recommends SAC305 SnAgCu solder for use on Vicor power modules.

g) Tip size: A larger tip will be able to heat a larger surface area, thus lowering soldering time. Since there are so many factors that influence soldering time, listing actual times is difficult. In general, it is recommended that the joint be

examined post-process to insure a quality soldering joint. If necessary, different parameters can then be varied in order to insure a solid process. The soldering times listed in *Table 1* can be used as a guideline for establishing more application and process specific parameters. Below are some recommendations for general practice:

- 1.** Do not run tip temperature above 810°F. This will greatly increase the risk of damaging the pads, traces, printed circuit board, or Vicor power module. Check with the printed circuit board manufacturer that the boards are RoHS capable and for any additional recommendations in regard to temperature.
- 2.** Apply the soldering iron to one side of the pin and pad and apply the solder to the other, allowing the heat from the pin and pad to melt the solder. Do not apply solder to the soldering iron and subsequently attempt to transfer it to the pad and pin. Melting the solder by applying it directly to the soldering iron does not guarantee adequate wetting on the joint and is not considered good technique.
- 3.** Do not apply excessive pressure with the soldering iron to the printed circuit board, barrel, or pad. This could result in breaking a trace, dislodging a barrel or damaging the PCB, which becomes noticeably softer when heated.
- 4.** Do not apply the soldering iron to a connection for an extended period of time or damage to the module could result. If the soldering times exceed the upper limit listed in *Table 1*, consider using a larger tip or a higher power soldering iron.
- 5.** Make sure PCB pads and holes are clean prior to soldering.
- 6.** Solders with no-clean flux may be used to facilitate soldering.
- 7.** Keep the tip of the soldering iron clean and free from resin. Apply a small amount of solder directly to the tip of the iron. This process is known as tinning.
- 8.** Be careful not to jar the module or PCB while the solder is cooling. This could result in a cold solder joint, a void in the barrel, or a cracked joint.
- 9.** If it is necessary to re-solder a joint, remove all existing solder from the pad and pin prior to reapplying solder.
- 10.** Use of a soldering gun is not recommended for soldering Vicor modules.
- 11.** It is not recommended that Maxi/Mini/Micro

(V24, V48, V300, V375 series) module pins be trimmed under any circumstances. VI-2xx, VI-Jxx module pins should be trimmed prior to soldering to avoid fracturing the solder joint. Any trimming should be done with an appropriate shearing device to avoid lead deformation.

As a procedural benchmark, given an 800°F temperature on a 60W iron with a 3mm tip, approximate times to solder a Vicor power module to a 0.062 thick PCB board with an appropriately sized copper trace would be in the range of *Table 1*.

Converter Family	Soldering Time (range)
VI-2xx, VI-Jxx	Signal 3-5 seconds
VI-2xx (full size)	Power 5-8 seconds
VI-Jxx (half size)	Power 4-7 seconds
Maxi/ Mini/Micro	Signal 3-5 seconds
Maxi	Power 5-8 seconds
Mini	Power 4-7 seconds
Micro	Power 3-5 seconds

Table 1: Recommended pin soldering times for Vicor modules

Again, please note that soldering for significantly longer periods of time than what is listed above could result in damage to the module. Table 1 should not be used without verifying that the times will produce a quality soldering joint as defined in the previous sections.

Wave Soldering

Vicor modules achieve an adequate solder connection on a wave soldering machine with conveyor speeds from three to seven feet per minute. As with hand soldering, times and parameters vary with the properties of the PCB and copper traces. As a standard benchmark, the parameters below may be used. As with hand-soldered boards, the results should be examined to insure a quality soldering joint and a sound process.

Wave soldering profile

1. Bottomside Preheaters: Zone 1- 177°C (350°F) , Zone 2- 149°C (300°F) Zone 3- 357°C (675°F)
2. Topside Preheaters: 104 -113°C (220-235° F)
3. Wave Temperature- 266°C (510°F)
4. Wave Type- 4.25" standard laminar wave

Preheating of the PCB is generally required for wave soldering operations to ensure adequate wetting of the solder to the PCB. The recommended temperature for PCB topside is 95-120°C prior to the molten wave. Thick, multilayer PCBs should be heated toward the upper limit of this range, while simple two layer PCBs should be heated to the lower limit. These parameters are consistent with generally accepted requirements for circuit card assembly. The power module is often much more massive than other components mounted to the PCB. During wave solder preheating, the pins will dissipate much of their absorbed heat within the module, therefore adjustments to preheaters alone will not improve module soldering significantly. A more effective way to improve the soldering of the module is to lower the conveyor speed and increase the dwell time in the molten wave. Approximately 5 seconds of exposure to the molten wave is required to achieve an acceptable solder joint for a Maxi/Mini/Micro power module. A VI-2xx/VI-Jxx module should solder effectively with 4 seconds of molten wave exposure.

Post Solder Cleaning

Vicor modules are not hermetically sealed and must not be exposed to liquid, including but not limited to cleaning solvents, aqueous washing solutions or pressurized sprays. Cleaning the backside of the PCB is acceptable provided no solvent contacts the body of the module.

When soldering, it is recommended that no-clean flux solder be used, as this will insure that potentially corrosive mobile ions will not remain on, around, or under the module following the soldering process.

If the application requires the PCB to be subject to an aqueous wash after soldering, then it is recommended that Vicor module accessories such as thru-hole or surface mount sockets be used. These sockets should be mounted to the PCB and the modules subsequently inserted following the aqueous washing sequence. For more information on PCB mounting accessories, please consult Vicor's online product catalog at www.vicorpower.com.

De-soldering Vicor Modules

Vicor modules should not be re-used after desoldering for the following reasons:

- Most de-soldering procedures introduce damaging mechanical and thermal stresses to the module.
- Devices or processes that may be capable of desoldering a Vicor module from a printed circuit board without causing damage have not been qualified for use with Vicor modules.

For applications that require removal of a module with the intent of reuse, use Vicor socketing systems.

Index of Common Soldering defects

1) Solder Bridge: A short circuit between two electrically unconnected points caused by a piece of solder inadvertently forming a "bridge" or connection between the two points. *Recommended solution: Use a smaller soldering tip, or hold the tip at a different angle when soldering, so as to only contact one pad at a time.*

2) Cold Solder: An incomplete or poor connection caused by either the barrel or the pin not being heated to the flow temperature of solder. A cold solder joint will typically exhibit a convex meniscus with possibly a dark spot around the barrel or pad. Also a cold solder joint will not be shiny, but will typically have a "dirty" appearance. CAUTION: A cold solder joint is not necessarily an open connection electrically, and cannot be diagnosed by a simple continuity check. A cold solder joint is frequently an electrically intermittent connection and is best diagnosed by way of visual inspection. A cold solder joint will likely become electrically open following a period of temperature cycling. *Recommended solution: Increase soldering iron temperature, soldering time, or use a soldering iron with a higher output wattage if hand soldering. If wave soldering, lower conveyor speed or increase preheat temperature.*

3) PC Board Damage: An intermittent or poor connection caused by damage to a trace, pad, or barrel. A damaged pad is best identified by a burn mark on the PCB, or a trace pad that moves when prodded with a mechanical object. Recommended solution: Lower the soldering iron temperature or the soldering time. If damage persists, use a lower power iron, or consult with the manufacturer of the PCB for recommended soldering guidelines.

4) De-wetting: The solder initially appears to wet but then pulls back to expose the pad surface. More

common in wave-soldering

Recommended solution: Make sure the PCB is clean prior to soldering.

5) Dry Joint: The solder has a dull gray appearance as opposed to a bright silver surface. The solder joint may have a mottled look as well, with jagged ridges. It is caused by the solder joint moving before it has completely cooled.

Recommended solution: Immobilize the module with respect to the PCB to insure that the solder joint cools properly.

6) Icicles: Jagged or conical extensions from solder fillet. These are caused by soldering with the temperature too low, or soldering to a highly heat absorbent surface.

Recommended solution: Increase the soldering temperature, but not outside the recommended limits. If necessary use a higher power soldering iron.

7) Pinholes: Small or large holes in surface of solder joint, most commonly occurring in wave solder systems.

Recommended solution: Increase preheat or topside heater temperature, but not outside the recommended limits.

References

Organizations:
www.ipc.org

Commercial:
www.aimsolder.com
www.alphametals.com
www.kester.com
www.multicore.com

Contact Information

Please consult Vicor's Application Engineering Group at 800-927-9474 or (978) 749-3341 for additional information and application specific recommendations.

Visit Vicor's website (www.vicorpower.com) for the latest version of this application note.



25 Frontage Road / Andover, MA 01810 www.vicr.com
Tel. 978.470.2900 / Fax 978.475.6715 / Applications Engineer 800.927.9474