



Figure 24.1 — Full- and half-size SlimMods

### SlimMod™

Vicor PCB mount power components are available in flangeless “SlimMod” package configurations that provide users with narrower width 1.8in [45,7mm] for tight printed circuit mount applications.

To order the SlimMod configuration, add the suffix “S” to the standard part number. Example: VI-260-CV-S. SlimMod clips are available for grounding the baseplate to the PCB ground plane.

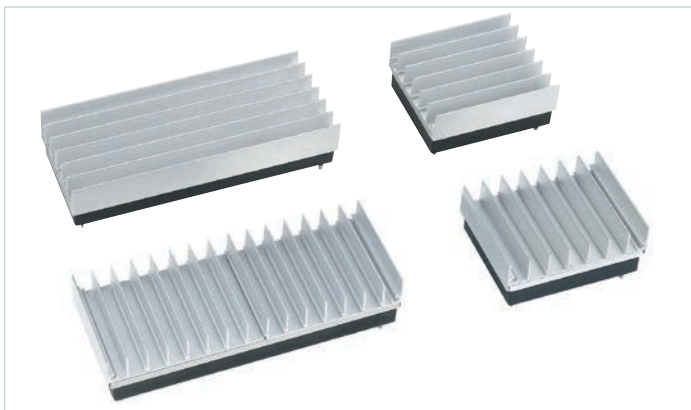


Figure 24.2 — Longitudinal and transverse FinMods

### FinMod™

Vicor PCB mount power components are also available in flangeless “FinMod” package configurations with integral finned heat sinks. FinMods eliminate the need for secondary heat sink assembly operations.

The full-size and half-size module components are available with heat sink heights of 0.25in [6,35mm] and 0.5in [12,7mm] longitudinal or transverse fin versions. To order the longitudinal fin configurations add the suffix “F1” 0.25in [6,35mm] or “F2” 0.5in [12,7mm] to the standard part number.<sup>[a]</sup> For transverse fins, add the suffix “F3” 0.25in [6,35mm] or “F4” 0.5in [12,7mm] to the standard part number.

<sup>[a]</sup> FinMod clips are available for grounding the baseplate to the PCB ground plane.

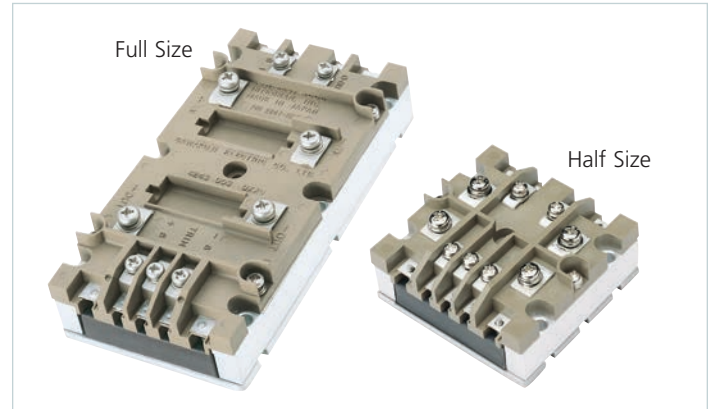


Figure 24.3 — BusMod module housing assembly

### BusMod™

The BusMod is a rugged module housing assembly that combines convenient chassis mounting with a screw / lug wiring interface for all electrical connections. To order the BusMod option, add “-B1” to the standard part number.

**NOTE:** The BusMod may be used with any of Vicor VI-/MI-200, VI-/MI-J00, IAM or VI-/MI-RAM modules, with the exception of the HAM.



Figure 24.4 — MegaMods housing assembly

### MegaMod™/MI-MegaMod DC-DC Converter Family

MegaMod/MI-MegaMod and MegaMod/MI-MegaMod Jr. DC-DC converters incorporate one, two or three Vicor VI-/MI-200 or VI-/MI-J00 DC-DC converters in a modular package to provide a chassis-mounted alternative to board-mounted power supplies. MegaMod/MI-MegaMods offer 50 – 600W of power from 1 – 3 outputs. MegaMod/MI-MegaMod Jr.s offer a total of 25 – 300W from 1 – 3 outputs. Each output may be independently sensed, adjusted, and sequenced using the procedures outlined for VI-/MI-200 and VI-/MI-J00 DC-DC converters.