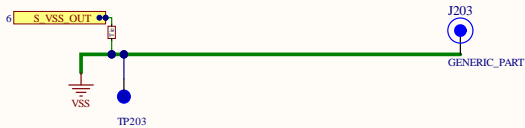
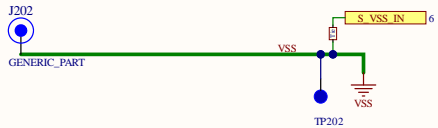
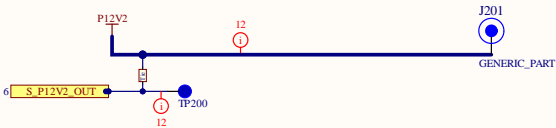


1		2		3		4		5		6							
Singola: DCM3717 Customer Evaluation Board										REV	DESCRIPTION	DATE	APPROVED				
										SEE SHEET 1							
<div><div>SHEET#</div><div>DESCRIPTION</div><div>1</div><div>LEGEND/Table of Contents</div><div>2</div><div>System Power Connections</div><div>3</div><div>Enable Control, PMBus Interface</div><div>4</div><div>DCM - Fusing, Filter, Control</div><div>5</div><div>Optional +INV discharge</div><div>6</div><div>System Testpoints</div></div>																	
														RAIL		Chipset	
P12V2		DCM3717S60E13G5TN1		40-60	61.5	74	10-12.5	750	900	30A							
P12V2		DCM3717S60D13K0TN1		40-60	82.0	90.2	10-12.5	1000	1100	40A							

Singola: DCM3717 Customer Evaluation Board

System power connections

REV	DESCRIPTION	DATE	APPROVED
See sheet 1			



DISCLAIMER: This reference design is provided for evaluation and engineering development purposes only and as-is, without warranties. Application environment, component selection, and PCB layout may significantly affect performance, reliability and safety. It is the user's responsibility to design, test and verify operation in the end application. No license to products or components is granted hereunder.

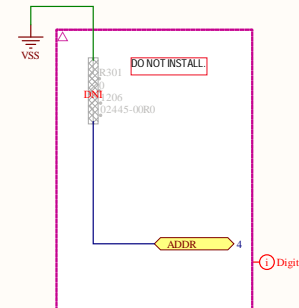
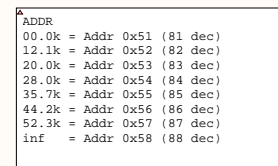
VICOR

Singola
DCM3717 Customer Evaluation Board

ASSEMBLY VARIANT: DCM3717E60E13G5TN1	SIZE B	FSCM NO. 67131	DWG NO. 52841-SCH	REV #1
FILENAME: 52841_28#1.SchDoc	DRAWN: Rosselli	DATE: 3/20/2025	SCALE: 1:1	SHEET 2 OF 6

REV	DESCRIPTION	DATE	APPROVED
	See sheet 1		

DESCRIPTION	DATE	APPROVED
See sheet 1		



VICOR

ASSEMBLY VARIANT:	DCM3717E60E13G5TN1
FILENAME:	52841_3R#1.SchDoc

FSCM NO.	67131
----------	-------

DWG NO.	52841-SCH	REV	#1
---------	-----------	-----	----

SCALE: 1:1

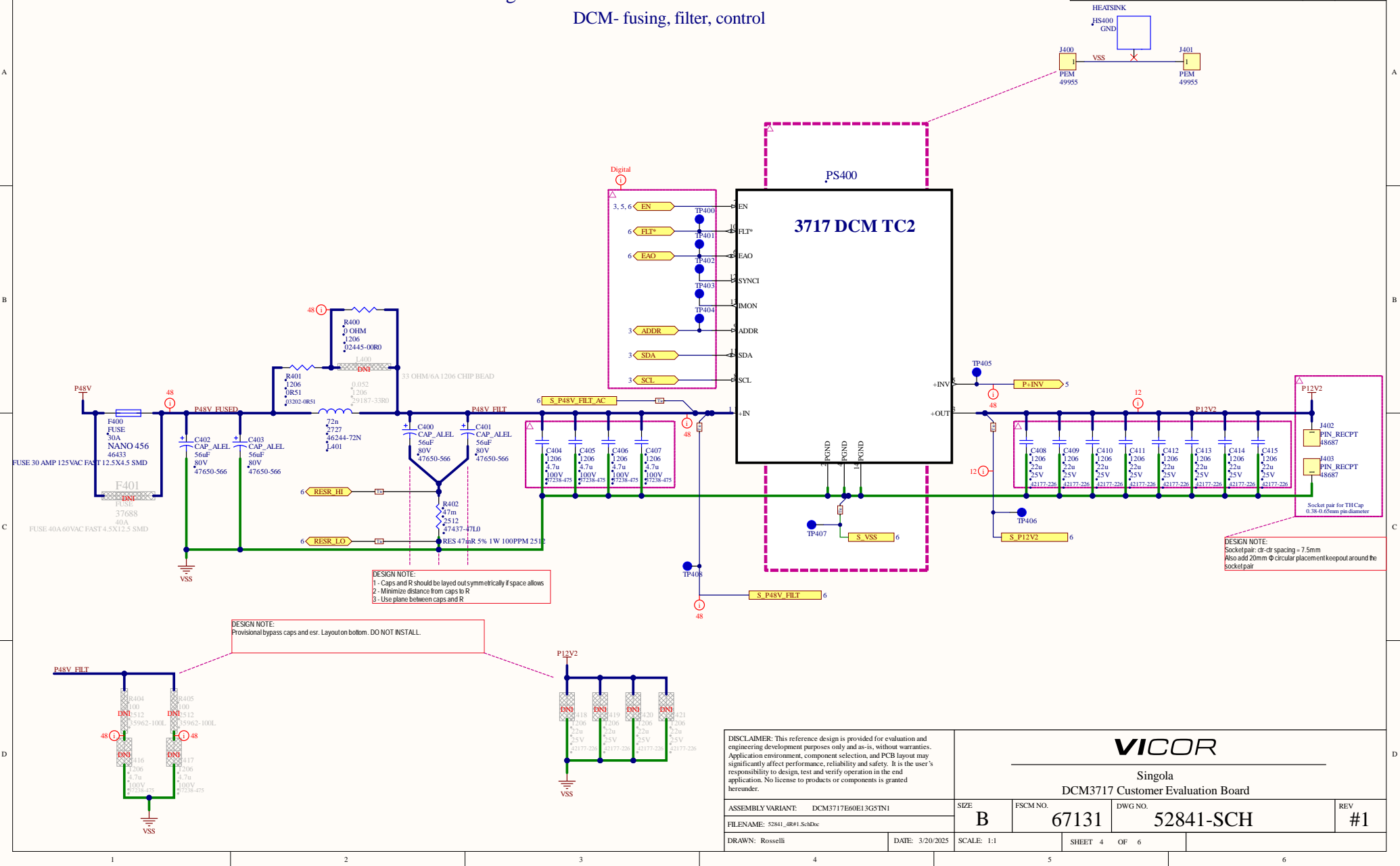
DATE: 3/20/2025

SCALE: 1:1

SHEET 3 OF 6

Singla: DCM3717 Customer Evaluation Board
DCM- fusing, filter, control

REV	DESCRIPTION	DATE	APPROVED
See sheet 1			



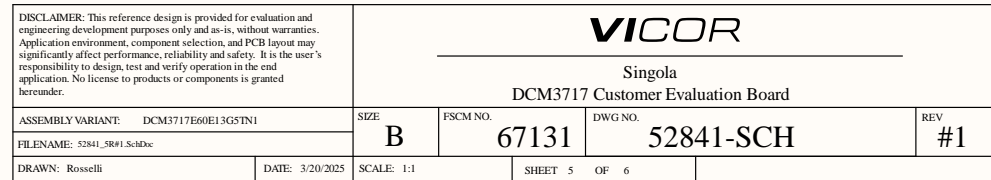
DISCLAIMER: This reference design is provided for evaluation and engineering development purposes only and as-is, without warranties. Application environment, component selection and PCB layout may significantly affect performance, reliability and safety. It is the user's responsibility to design, test and verify operation in the end application. No license to products or components is granted hereunder.

VICOR

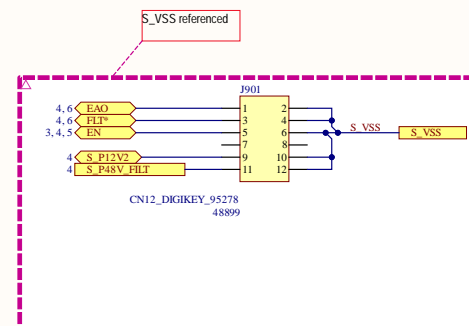
Singla
DCM3717 Customer Evaluation Board

ASSEMBLY VARIANT: DCM3717E60E1 3G5TN1	SIZE B	FSCM NO. 67131	DWG NO. 52841-SCH	REV #1
FILENAME: 52841_AR#1.SchDoc				
DRAWN: Rosselli	DATE: 3/20/2025	SCALE: 1:1	SHEET 4 OF 6	

REV	DESCRIPTION	DATE	APPROVED
	See sheet 1		



REV	DESCRIPTION	DATE	APPROVED
	See sheet 1		



SHEET 6 OF 6